

RESEARCH ARTICLE

# Diversity and phylogenetic relationships among *Bartonella* strains from Thai bats

Clifton D. McKee<sup>1,2\*</sup>, Michael Y. Kosoy<sup>1</sup>, Ying Bai<sup>1</sup>, Lynn M. Osikowicz<sup>1</sup>, Richard Franka<sup>3</sup>, Amy T. Gilbert<sup>3,4</sup>, Sumalee Boonmar<sup>5</sup>, Charles E. Rupprecht<sup>6</sup>, Leonard F. Peruski<sup>7</sup>

**1** Division of Vector-Borne Diseases, Centers for Disease Control and Prevention, Fort Collins, CO, United States of America, **2** Department of Biology, Colorado State University, Fort Collins, CO, United States of America, **3** Division of High-Consequence Pathogens and Pathology, Centers for Disease Control and Prevention, Atlanta, GA, United States of America, **4** National Wildlife Research Center, USDA/APHIS/Wildlife Services, Fort Collins, CO, United States of America, **5** Faculty Sciences and Public Health, Rajabruk University, Nonthaburi, Thailand, **6** LYSSA LLC, Lawrenceville, GA, United States of America, **7** Center for Global Health, Centers for Disease Control and Prevention, Atlanta, GA, United States of America

\* [xmm9@cdc.gov](mailto:xmm9@cdc.gov)



**OPEN ACCESS**

**Citation:** McKee CD, Kosoy MY, Bai Y, Osikowicz LM, Franka R, Gilbert AT, et al. (2017) Diversity and phylogenetic relationships among *Bartonella* strains from Thai bats. PLoS ONE 12(7): e0181696. <https://doi.org/10.1371/journal.pone.0181696>

**Editor:** Wanda Markotter, University of Pretoria, SOUTH AFRICA

**Received:** January 6, 2017

**Accepted:** July 4, 2017

**Published:** July 20, 2017

**Copyright:** This is an open access article, free of all copyright, and may be freely reproduced, distributed, transmitted, modified, built upon, or otherwise used by anyone for any lawful purpose. The work is made available under the [Creative Commons CC0](https://creativecommons.org/licenses/by/4.0/) public domain dedication.

**Data Availability Statement:** Unique alleles from this study were submitted to GenBank with the following accession numbers: KY232154 to KY232182 and MF288092 (*ftsZ*), KY232183 to KY232224 (*gltA*), KY232254 to KY232282 and MF288099 (*nuoG*), KY232283 to KY232311 and MF288103 (*rpoB*), and KY232225 to KY232253 and MF288133 (*ITS*).

**Funding:** This study was supported by the US Centers for Disease Control and Prevention, Center for Global Health, Global Disease Detection

## Abstract

*Bartonellae* are phylogenetically diverse, intracellular bacteria commonly found in mammals. Previous studies have demonstrated that bats have a high prevalence and diversity of *Bartonella* infections globally. Isolates ( $n = 42$ ) were obtained from five bat species in four provinces of Thailand and analyzed using sequences of the citrate synthase gene (*gltA*). Sequences clustered into seven distinct genogroups; four of these genogroups displayed similarity with *Bartonella* spp. sequences from other bats in Southeast Asia, Africa, and Eastern Europe. Thirty of the isolates representing these seven genogroups were further characterized by sequencing four additional loci (*ftsZ*, *nuoG*, *rpoB*, and *ITS*) to clarify their evolutionary relationships with other *Bartonella* species and to assess patterns of diversity among strains. Among the seven genogroups, there were differences in the number of sequence variants, ranging from 1–5, and the amount of nucleotide divergence, ranging from 0.035–3.9%. Overall, these seven genogroups meet the criteria for distinction as novel *Bartonella* species, with sequence divergence among genogroups ranging from 6.4–15.8%. Evidence of intra- and intercontinental phylogenetic relationships and instances of homologous recombination among *Bartonella* genogroups in related bat species were found in Thai bats.

## Introduction

Of the emerging infectious diseases in humans, most are zoonoses originating in wildlife [1,2]. Thus, surveillance and characterization of zoonotic infections is fundamental to protecting public health and understanding infectious disease ecology. Following the discovery that numerous severe viral infections are linked to bats [3], efforts to detect and understand the dynamics of viral, bacterial, and fungal zoonotic infections of bats have increased in recent years.

Technical Support Corps funds to MYK and CER. LYSSA LLC provided support in the form of salary for CER, but did not have any additional role in the study design, data collection and analysis, decision to publish, or preparation of the manuscript. The specific roles of these authors are articulated in the Author Contributions section.

**Competing interests:** The authors have declared that no competing interests exist. The affiliation of CER with LYSSA LLC does not alter our adherence to PLOS ONE policies on sharing data and materials.

One genus of bacteria, *Bartonella*, is frequently found in wildlife. Bartonellae (Rhizobiales, Alphaproteobacteria) are fastidious, facultative, hemotropic bacteria that infect a variety of mammalian groups, including ungulates, rodents, carnivores, and primates [4]. Hematophagous arthropods (e.g., flies, ticks, fleas, and mites) are believed to be the primary vectors of *Bartonella* spp. infections [5,6] and studies have demonstrated the competence of a small number of vector species [7–11]. Over 30 *Bartonella* species have been named and characterized, and candidate species are being discovered as new mammal species and their ectoparasites are sampled. Among the named *Bartonella* species, approximately half have now been identified as zoonotic and can cause a wide spectrum of illnesses in people ranging from self-limiting fever to endocarditis [12–14]. Given the potential health impacts of bartonellae and increasing risk of zoonoses due to human interaction with wildlife and their vectors, surveillance for new *Bartonella* species, especially in new mammalian groups and geographic regions, is important to capture the substantial diversity of this genus and to study the natural cycles of transmission in the hosts.

*Bartonella* spp. infections have now been found in over 60 bat species representing over 40 genera, 11 families, and both suborders from Central and South America, Africa, Europe, and Southeast Asia. Diversification of *Bartonella* species in bats appears to have followed the diversification of bats, with clades of *Bartonella* spp. confined to particular bat families, superfamilies, and suborders [15,16]. Very recent studies of *Bartonella* spp. in bats from Algeria [17], Madagascar and the Union of Comoros [18], French Guiana [19], Saint Kitts [20], South Africa [21], the Republic of Georgia [22], China [23], France and Spain [24], the United States [25], Argentina [26], and Brazil [27] have only added to this substantial diversity. Despite apparent phylogenetic patterns linking bats and bat-associated bartonellae, there is evidence that spillover of bartonellae from bats into other mammals is possible, particularly to humans and dogs [22,28–32].

In the present study, we characterize the diversity of *Bartonella* spp. found in bats sampled in Thailand. Thailand possesses a high diversity of mammal species, particularly bats, many of which may carry zoonotic infections [33]. Bats and their ectoparasites within the region (e.g., China, Laos, Vietnam, Taiwan, and Malaysia) have been laboratory-confirmed to harbor bartonellae [23,32,34,35]. We hypothesized that *Bartonella* species identified in Thailand may likely have phylogenetic relationships with *Bartonella* species previously identified in related bat hosts. We utilized gene sequencing of the citrate synthase gene (*gltA*) and multi-locus sequence typing (MLST) of four additional loci to characterize *Bartonella* spp. isolates from five bat species from four regions in Thailand. MLST is an approach frequently applied to distinguish among *Bartonella* species and epidemiologically relevant strains [36–38]. Utilizing multiple loci can elucidate distant evolutionary relationships, clonal stability, and recombination events among *Bartonella* species [38,39]. This study expands our knowledge of the host range and diversity of *Bartonella* spp. in bats from Southeast Asia and enriches our understanding of the evolutionary history of this diverse genus globally.

## Materials and methods

### *Bartonella* spp. cultures

The current study is based on comparative characterization of 42 cultures of *Bartonella* species (Table 1) selected from isolates obtained from whole blood of bats collected in four Thai provinces: Chiang Rai (north), Kamphaeng Phet (west), Khon Kaen (northeast), and Sa Kaeo (east), as described [40]. Captured bats were anesthetized by intramuscular injection of ketamine hydrochloride (0.05–0.1 mg/g body weight) and euthanized under sedation in accordance with the field protocol approved by the CDC Institutional Animal Care and Use Committee; the

**Table 1. Allelic profiles and sequence types (ST) of 30 *Bartonella* isolates from Thai bats.**

Host	Province	Isolate	<i>ftsZ</i>	<i>gltA</i>	ITS	<i>nuoG</i>	<i>rpoB</i>	ST	Genogroup
<i>C. plicatus</i>	Sa Kaeo	SK128	1	1	1	1	1	ST1	Cp1
<i>C. plicatus</i>	Sa Kaeo	SK130	1	1	1	1	1	ST1	Cp1
<i>C. plicatus</i>	Sa Kaeo	SK144	1	1	1	1	1	ST1	Cp1
<i>C. plicatus</i>	Sa Kaeo	SK157	1	1	1	1	1	ST1	Cp1
<i>C. plicatus</i>	Sa Kaeo	SK166	1	1	1	1	1	ST1	Cp1
<i>C. plicatus</i>	Sa Kaeo	SK168	1	1	1	1	1	ST1	Cp1
<i>C. plicatus</i>	Sa Kaeo	SK189	1	1	1	1	1	ST1	Cp1
<i>C. plicatus</i>	Sa Kaeo	SK191	1	1	1	1	1	ST1	Cp1
<i>C. plicatus</i>	Sa Kaeo	SK202	1	1	1	1	1	ST1	Cp1
<i>C. plicatus</i>	Sa Kaeo	SK170	1	2	1	1	1	ST2	Cp1
<i>C. plicatus</i>	Sa Kaeo	SK194	2	3	2	2	2	ST3	Cp2
<i>C. plicatus</i>	Sa Kaeo	SK197	2	3	3	2	2	ST4	Cp2
<i>C. plicatus</i>	Sa Kaeo	SK163	3	4	4	3	3	ST5	Cp3
<i>C. plicatus</i>	Sa Kaeo	SK165	3	4	5	3	3	ST6	Cp3
<i>C. plicatus</i>	Sa Kaeo	SK180	3	4	4	3	3	ST5	Cp3
<i>C. plicatus</i>	Sa Kaeo	SK198a	3	4	4	3	3	ST5	Cp3
<i>H. armiger</i>	Khon Kaen	KK182	4	5	6	5	4	ST7	H3
<i>H. larvatus</i>	Kamphaeng Phet	KP270	4	6	6	4	4	ST8	H3
<i>H. larvatus</i>	Kamphaeng Phet	KP215	5	5	7	4	5	ST9	H3
<i>H. fulvus</i>	Chiang Rai	CR224	6	7	8	6	6	ST10	H3
<i>H. larvatus</i>	Kamphaeng Phet	KP277	7	8	9	7	7	ST11	H2
<i>Hipposideros</i> sp.	Sa Kaeo	KP174	8	9	10	4	8	ST12	H1
<i>H. larvatus</i>	Kamphaeng Phet	KP287a	9	9	10	8	7	ST13	H1
<i>H. larvatus</i>	Kamphaeng Phet	KP216a	8	9	10	8	8	ST14	H1
<i>H. larvatus</i>	Kamphaeng Phet	KP268a	8	9	10	8	8	ST14	H1
<i>H. larvatus</i>	Kamphaeng Phet	KP292	8	9	10	8	8	ST14	H1
<i>H. armiger</i>	Khon Kaen	KK200a	8	9	10	8	9	ST15	H1
<i>H. larvatus</i>	Kamphaeng Phet	KK290	8	9	10	8	9	ST15	H1
<i>H. larvatus</i>	Kamphaeng Phet	KP293a	9	9	10	8	8	ST16	H1
<i>T. melanopogon</i>	Kamphaeng Phet	KP283b	10	10	11	9	10	ST17	Tm

Genogroups were determined using a combination of sequence typing, phylogenetic analysis, and population clustering.

<https://doi.org/10.1371/journal.pone.0181696.t001>

CDC IACUC also specifically approved this study. The Supplementary Material (S1 Text) contains additional details regarding sampling locations (Fig A in S1 Text), bat capture, species distributions (Fig B in S1 Text), culturing procedures, and infection prevalence among species and locations (Table A in S1 Text). *Bartonella* spp. bacteria were cultured from blood of 34 (36.6%) of 93 bats distributed among all four provinces and representing five bat species: the wrinkle-lipped free-tailed bat (*Chaerephon plicatus*, Molossidae), the great roundleaf bat (*Hipposideros armiger*, Hipposideridae), the fulvus roundleaf bat (*H. fulvus*), the intermediate roundleaf bat (*H. larvatus*), and the black-bearded tomb bat (*Taphozous melanopogon*, Emballonuridae).

### DNA purification and multi-locus sequence typing (MLST)

A suspension of pure cultured isolate was heated to 95°C for 10 min followed by 1 min centrifugation at 8000 rpm for the lysed cells to precipitate. The supernatant was then moved to a clean microcentrifuge tube for storage until examination. Isolates were initially verified as *Bartonella* spp. and genotyped by PCR amplification of a fragment of the citrate synthase gene

**Table 2. Oligonucleotide primers used for MLST characterization of Bartonella strains.**

Locus	Product	Primer	Primer sequence (5' to 3')
<i>ftsZ</i>	Cell division protein	Bfp1 (f) [43]	ATTAATCTGCAYCGGCCAGA
		Bfp2 (r) [43]	ACVGADACACGAATAACACC
<i>gltA</i>	Citrate synthase	BhCS781.p (f) [41]	GGGGACCAGCTCATGGTGG
		BhCS1137.n (r) [41]	AATGC AAAAAGAACAGTAAACA
<i>nuoG</i>	NADH dehydrogenase $\gamma$ -subunit	nuoG1F (f) [44]	GGCGTGATTGTTCTCGTTA
		nuoG1R (r) [44]	CACGACCACGGCTATCAAT
<i>rpoB</i>	RNA polymerase $\beta$ -subunit	1400F (f) [45]	CGCATTGGCTTACTTCGTATG
		2300R (r) [45]	GTAGACTGATTAGAACGCTG
ITS	16S–23S internal transcribed spacer	325s (f) [46]	CTTCAGATGATGATCCCAAGCCTTCTGGCG
		1100as (r) [46]	GAACCGACGACCCCTGCTTGCAAAGA

Listed references include detailed thermocycler protocols. For each primer set, (f) indicates the forward primer and (r) indicates the reverse primer.

<https://doi.org/10.1371/journal.pone.0181696.t002>

(*gltA*) following previous studies [41,42]. PCR products were separated by 1.5% gel electrophoresis and visualized by ethidium bromide staining. Positive PCR products were purified using the QIAquick PCR Purification Kit (QIAGEN, Valencia, CA) according to manufacturer protocols and sequenced in both directions with the same primers on an Applied Biosystems Model 3130 Genetic Analyzer (Applied Biosystems, Foster City, CA). Obtained forward and reverse reads were assembled using Lasergene v11 (DNASTAR, Madison, WI). Sequences were first verified as *Bartonella* spp. DNA using BLAST (National Center for Biotechnology Information, Bethesda, MD) and closely matching sequences (>95% sequence identity) were downloaded as references.

Further characterization of 30 isolates from *Hipposideros* spp., *C. plicatus*, and *T. melanopogon* was performed using MLST of four additional loci (*ftsZ*, *nuoG*, *rpoB*, and ITS) previously used for characterization of *Bartonella* strains [38,39,41,43–46]. Primers and associated references for protocols are provided in Table 2. PCR purification, sequencing, and alignment used the same methods as with *gltA*. All sequences were aligned with MAFFT v7.187 using the local, accurate L-INS-I algorithm [47], trimmed to equal lengths with Gblocks v0.91b [48], and compared with other *Bartonella* strains from bats, bat ectoparasites, and known *Bartonella* species (Table B in S1 Text).

Each unique variant was assigned to a sequence type (ST) based on the allelic profile (Table 1). Nucleotide polymorphisms and diversity of the five MLST loci were examined in MEGA v7.0.21 [49] among all 17 STs. The correct open reading frame for protein coding loci (*ftsZ*, *gltA*, *nuoG*, and *rpoB*) was determined by checking all starting positions and choosing the frame that contained no premature stop codons. Ratios of non-synonymous to synonymous substitutions (dN/dS) were calculated using the Nei-Gojobori method for each of the loci to check for evidence of selection. Nucleotide diversity ( $\pi$ ) and mean pairwise sequence distance were estimated for the five loci separately and for concatenated sequences; sequence distances were calculated as the number of substitutions per site. ITS sequences contained gap regions, so the total lengths of sequences for this locus and concatenated sequences include gaps.

### Phylogenetic analysis

The optimal substitution model was selected with jModelTest v2.1.6 [50] using Akaike’s information criterion corrected for finite sample sizes (AICc) [51]. The generalized time-reversible model with four gamma-distributed rate categories and a proportion of invariant sites (GTR

+ $\Gamma$ +I) was the best available model for all loci. Separate maximum likelihood (ML) phylogenetic trees for each locus (*gltA*, *ftsZ*, *nuoG*, *rpoB*, and ITS) were created for the 30 isolates characterized by multiple loci to visualize clustering of strains and to identify potential recombination events among loci. Trees were generated without reference sequences with RAxML v8.2.10 [52] using 1000 bootstrap replicates to estimate node support.

A Bayesian phylogeny of *gltA* sequences from Thai bats, known *Bartonella* species, and select *Bartonella* strains from bats and their ectoparasites from the Americas [19,25,34,53], Europe [22,31,54,55], Africa [18,38,42], and Southeast Asia [23,32,35]. This selection of bat-associated *Bartonella* strains is representative of phylogenetic clades found in previous phylogenies of *gltA* sequences from bats [16,22]. Closely matching sequences (>95% sequence identity) based on the initial BLAST search from free-ranging dogs from Thailand [28] and other bats and ectoparasites from Vietnam, Laos, and Malaysia [34,35] were included in the phylogenetic analysis. The *gltA* phylogeny was inferred by Markov chain Monte Carlo (MCMC) sampling in BEAST v1.8.4 [56,57] using the GTR+ $\Gamma$ +I model. Well-supported clades (posterior probability > 0.9) of bat-associated *Bartonella* strains were collapsed within the *gltA* phylogeny and labeled with the host families and countries represented in the clade to reduce complexity.

A second Bayesian tree was generated from concatenated sequences of five loci (*ftsZ*, *gltA*, *nuoG*, *rpoB*, and ITS) from Thai bats (30 isolates), known *Bartonella* species, and other *Bartonella* strains from bats [31,32,38,42]. The selection of bat strains for the multi-locus phylogeny was taken from the same set of strains used in the *gltA* analysis, with the added restriction that the strains had been characterized by at least two of the loci we had sequenced from Thai bats. This restricted set contained strains from the Americas [19,25], Europe [22,31,55], Africa [38,42], and Southeast Asia [32] and is representative of clades found in previous multi-locus phylogenies of bat-associated *Bartonella* species [22,38]. For the multi-locus phylogeny, we used separate partitions for each of the five loci; each locus was analyzed under the GTR+ $\Gamma$ +I substitution model, but parameters were allowed to vary for each partitioned locus. All loci were linked with the same clock model and speciation model. GenBank accession numbers for all sequences used in the *gltA* and multi-locus phylogenetic analyses are listed in the Supplementary Material (Table B in S1 Text).

For both BEAST phylogenies, we set the number of MCMC iterations to  $2 \times 10^8$ , sampling every  $2 \times 10^4$ th iteration. No codon partitions were used for either the *gltA* or multi-locus analyses due to the short sequence length of all loci which could substantially reduce the effective sample size of estimated parameters for each codon position. A strict molecular clock was chosen for both phylogenies because we did not seek to accurately estimate branch times. Additionally, all of the isolates from Thai bats were cultured around the same date and therefore could not be used to calibrate another clock model. We chose to use the birth-death model with incomplete sampling to represent patterns of speciation in the phylogeny [58]. All priors were kept at the default, diffuse settings for both the *gltA* and multi-locus analyses (see S1 Text for details). Three separate chains were run and effective sample sizes (ESS) and mixing of parameters during MCMC sampling were assessed using Tracer v1.6 [56]. Chains were then combined and the maximum clade credibility tree was found using TreeAnnotator [56,57].

## Recombination and admixture analysis

To assess the level of recombination among sequence types, a phylogenetic network was inferred using the Neighbor-Net algorithm in SplitsTree v4.13.1 [59] from concatenated sequences of all five loci (*ftsZ*, *gltA*, *nuoG*, *rpoB*, and ITS) from the 30 *Bartonella* isolates from Thai bats evaluated by MLST. The pairwise homoplasy index [60] was calculated in SplitsTree to test for significant recombination among the sequence types. Bayesian population clustering

was performed with STRUCTURE v2.3.4 [61] using concatenated sequences of all five loci from the 30 isolates evaluated by MLST. The program was run five times for each value of K (the number of population clusters) ranging from 3–10 for  $5 \times 10^4$  iterations and  $5 \times 10^4$  burn-in iterations using the admixture model with correlated allele frequencies. Convergence of MCMC chains for each run was assessed by visual analysis of trace diagrams for all measured parameters. The optimal value of K was estimated according to the  $\Delta K$  method [62] with STRUCTURE HARVESTER v0.6.94 [63]. We did not evaluate K = 2 due to our prior observation of at least three distinct clades in the multi-locus phylogeny based on host genus (*Hipposideros* spp., *Chaerephon* sp., and *Taphozous* sp.) and a recently observed bias towards the selection of K = 2 as the optimal number of populations in studies that use the  $\Delta K$  method [64].

## Nucleotide sequence accession numbers

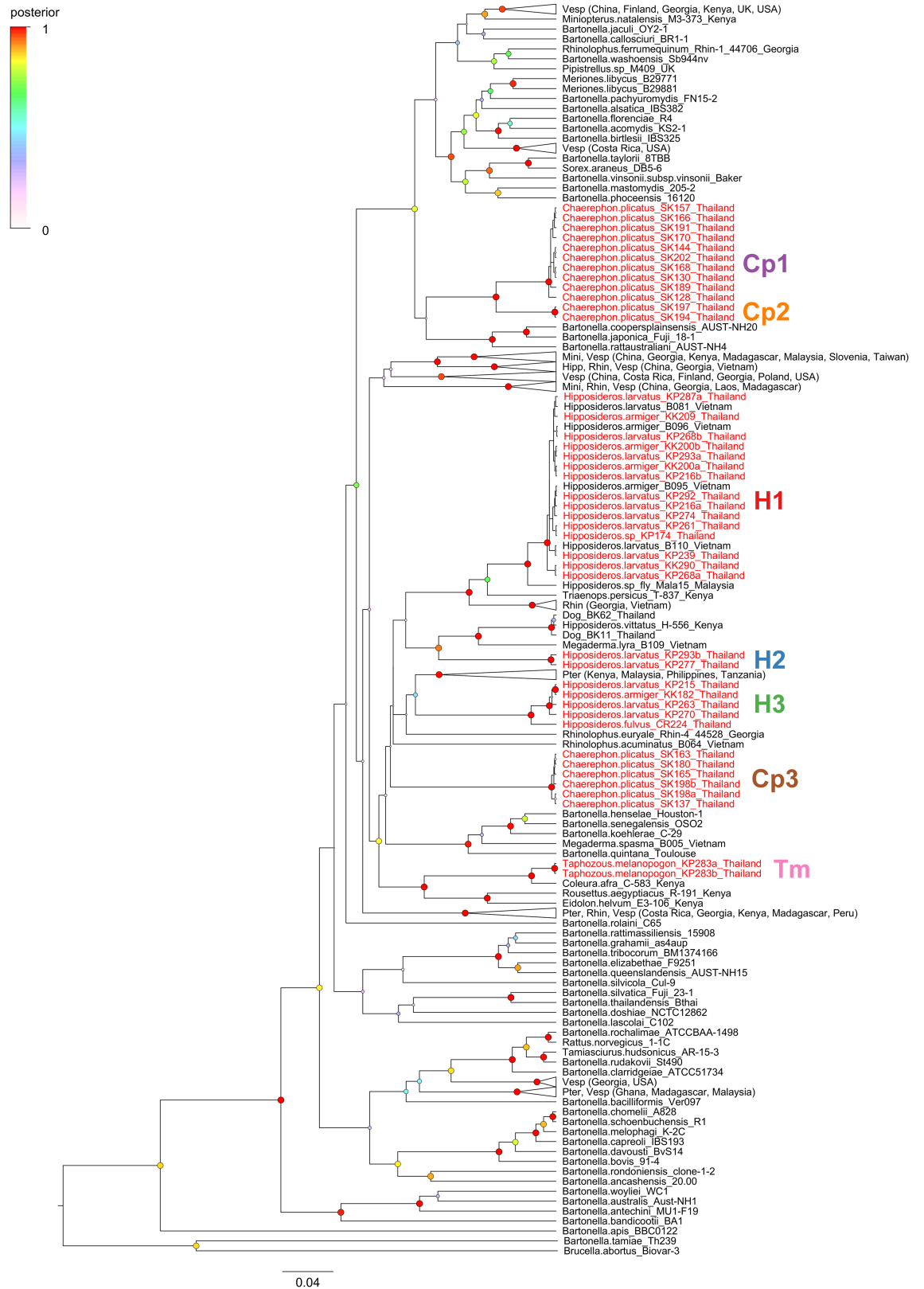
Unique alleles from this study were submitted to GenBank with the following accession numbers: KY232154 to KY232182 and MF288092 (*ftsZ*), KY232183 to KY232224 (*gltA*), KY232254 to KY232282 and MF288099 (*nuoG*), KY232283 to KY232311 and MF288103 (*rpoB*), and KY232225 to KY232253 and MF288133 (ITS).

## Results

### Analysis of *gltA* genotypes

Initial phylogenetic analysis based on *gltA* sequences (Fig 1) demonstrated the presence of three genogroups found in *Hipposideros* spp. bats (H1-3), three other genogroups found in *Chaerephon plicatus* (Cp1-3), and a distinct genogroup in *Taphozous melanopogon* (Tm). Posterior distributions for the *gltA* tree likelihood and all estimated parameters of the substitution model and the birth-death speciation model converged and had sufficient effective sample sizes (ESS > 200) for each of the three chains separately and combined. Sequences from one genogroup (H1) from Thai *H. armiger* and *H. larvatus* were nearly identical (>99% sequence identity) to sequences found in *H. armiger* and *H. larvatus* from Vietnam [35]. This genogroup formed a well-supported clade (posterior probability = 1) with other sequences from hipposiderid and rhinolophid bats and their bat flies from Vietnam [35], Malaysia [34], Kenya [42], and Georgia [22]. Another group of sequences from *H. larvatus* (H2) formed a clade (posterior probability = 0.93) with *Bartonella* genotypes from *Megaderma lyra* in Vietnam [35], *Hipposideros vittatus* (previously identified as *H. commersoni*) from Kenya [42,65], and community dogs from Thailand [28], with sequence identities ranging from 88–90% in this clade. The third genogroup (H3) from *H. armiger*, *H. fulvus*, and *H. larvatus* clustered (88–90% sequence identity) with *Bartonella* species found in pteropodid bats: *Bartonella* species found in *Eidolon helvum* from Africa [38,42], sequences from bat flies collected from *Pteropus hypomelanus* in Malaysia [34], and bat flies from *Ptenochirus jagori* and *Harpyionycteris whiteheadi* in the Philippines [34]. However, the posterior support for this clade was only 0.45 based on data from *gltA* sequences alone.

Two genogroups found in *C. plicatus* (Cp1 and Cp2) are closely related (94% sequence identity) to each other and formed a well-supported clade (posterior probability = 1). These two genogroups were more distantly related (87% sequence identity) to the third cluster (Cp3). Finally, the single genogroup from *T. melanopogon* (Tm) is very closely related (95% sequence identity) to the *Bartonella* strain found in *Coleura afra*, another emballonurid bat, in Kenya [42]. These two groups form a well-supported clade (posterior probability = 1) with *Bartonella* species from African pteropodid bats (*Eidolon helvum* and *Rousettus aegyptiacus*) [42]. Sequence divergence was  $\leq 3.1\%$  within a genogroup and 6.2–16.2% among genogroups.



**Fig 1. Phylogenetic relationships among citrate synthase (*gltA*) sequences of *Bartonella* strains from Thai bats.** The phylogeny was inferred by Bayesian analysis in BEAST using the GTR+Γ+I substitution model and a birth-death speciation

model with incomplete sampling. Branch lengths are in substitutions per site and posterior probabilities of nodes are indicated by the size and color of circles at each node. Tip labels for *Bartonella* strains from Thai bats are colored red and distinct genogroups are marked to the right of the tree. Well-supported clades (posterior probability >0.9) of bat-associated *Bartonella* strains were collapsed and labeled with the bat families and countries represented in the clade. Bat family abbreviations: Hipp, Hipposideridae; Mini, Minipteridae; Pter, Pteropodidae; Rhin, Rhinolophidae; Vesp, Vespertilionidae. Other *Bartonella* strains from bats distinct from these collapsed clades are marked with the host species and country of origin.

<https://doi.org/10.1371/journal.pone.0181696.g001>

All of these separate clusters are sufficiently distinct from one another based on *gltA* sequences (<96% DNA similarity) to be considered putative new *Bartonella* species [66]. However, as we acknowledged above, genogroup H1 appears to have been discovered previously in *H. armiger* and *H. larvatus* from Vietnam [35], but was not cultured or characterized by additional genetic loci.

### Allelic profiles and sequence types

Based on allelic profiling, the MLST analysis distinguished 17 sequence types (ST) among the 30 isolates (Table 1). All five sequenced loci distinguished either eight or nine alleles among the isolates. Genogroups Cp1–3 contained isolates from only *C. plicatus*. Genogroup Cp1 was almost entirely clonal with nine isolates characterized as ST1 and a single isolate of ST2; the distance among STs based on concatenated sequences of the five loci was 0.036%. Genogroup Cp2 had two distinct isolates, characterized as ST3 and ST4, with a distance of 0.035% among STs. Genogroup Cp3 was also nearly clonal, with three isolates characterized as ST5 and one isolate as ST6; the distance among STs was 0.14%.

Genogroup H1 was comprised of isolates from *H. armiger*, *H. larvatus*, and another *Hipposideros* sp. bat. This group was the most variable, with five distinct STs (ST12–16) with a maximum sequence distance of 3.9%. Genogroup H2 from *H. larvatus* was a single, distinct type (ST11). Genogroup H3 had isolates from *H. armiger*, *H. fulvus*, and *H. larvatus* with four distinct sequence types (ST7–10) with a maximum sequence distance of 2.0%.

Some of the unique sequence types arose from apparent homologous recombination events among genogroups, highlighted in the individual gene trees (Figs C–G in S1 Text). One strain from *H. larvatus* (isolate KP287a, ST13) clustered with genogroup H1 for all loci except for *rpoB* where it clustered with genogroup H2. Another strain from the *Hipposideros* sp. bat (isolate KP174, ST12) clustered with genogroup H1 for all loci except *nuoG* where it clustered with genogroup H3. Even with these recombinant strains, genogroups remained distinct, with ≤3.9% sequence distance within a genogroup and 6.4–15.8% distance among genogroups.

### Patterns of selection and diversity in nucleotide sequences

The five analyzed loci revealed different levels of variation over the length of sequenced fragments (Table 3), ranging from 21.6% variable sites for *ftsZ* to 45.3% for ITS. Mean pairwise sequence distances ranged from 8.3% for *ftsZ* to 22.8% for ITS. Nucleotide diversity showed a similar pattern, with values ranging from 8.0% for *ftsZ* to 12.7% for ITS. Based on concatenated sequences from all five loci, there were 895 (28.7%) variable sites among the 30 STs over the length of the alignment with 9.5% nucleotide diversity and a mean pairwise distance of 11.0%. Calculated dN/dS ratios from protein coding loci were generally low, ranging from 0.03 for *ftsZ* to 0.09 for *gltA*, indicating that purifying selection is dominant for these genes.

### Phylogenetic analysis of multiple loci

The Bayesian tree assembled by partitioned analysis of *ftsZ*, *gltA*, *nuoG*, and *rpoB* sequences (Fig 2) clarified the phylogenetic position of the seven genogroups identified by *gltA* sequences



**Table 3. Nucleotide polymorphism and diversity among *Bartonella* strains from Thai bats.**

Genes	Size (bp)	# alleles	V	N	V (%)	N (%)	dN	dS	dN/dS	π (%)	Mean pairwise distance (%)
<i>ftsZ</i>	886	10	191	17	21.6	5.8	0.01	0.31	0.03	8.0	8.3
<i>gltA</i>	356	10	101	19	28.4	16.1	0.03	0.32	0.09	9.3	9.3
<i>nuoG</i>	353	9	86	10	24.4	8.5	0.02	0.31	0.06	8.6	8.9
<i>rpoB</i>	833	10	205	20	24.6	7.2	0.02	0.36	0.04	9.0	9.9
ITS	689	11	312	NA	45.3	NA	NA	NA	NA	12.7	22.8
Concatenate, no ITS	2428	15	583	66	24.0	8.2	0.02	0.33	0.05	8.6	9.1
Concatenate	3117	17	895	NA	28.7	NA	NA	NA	NA	9.5	11.0

Values are calculated from all individuals (n = 30). ITS is not a protein coding locus and contains large insertions and deletions, thus only nucleotide diversity is calculated. The length of ITS sequences is based on aligned sequences, which includes gaps. π, average number of nucleotide differences per site; V, number of variable sites; N, number of non-synonymous sites; S, number of synonymous sites; dS, number of synonymous changes per synonymous site; dN, number of non-synonymous changes per non-synonymous site; NA, not applicable. Mean pairwise distance was calculated using the number of substitutions per site and dN and dS were calculated using the Nei-Gojobori method.

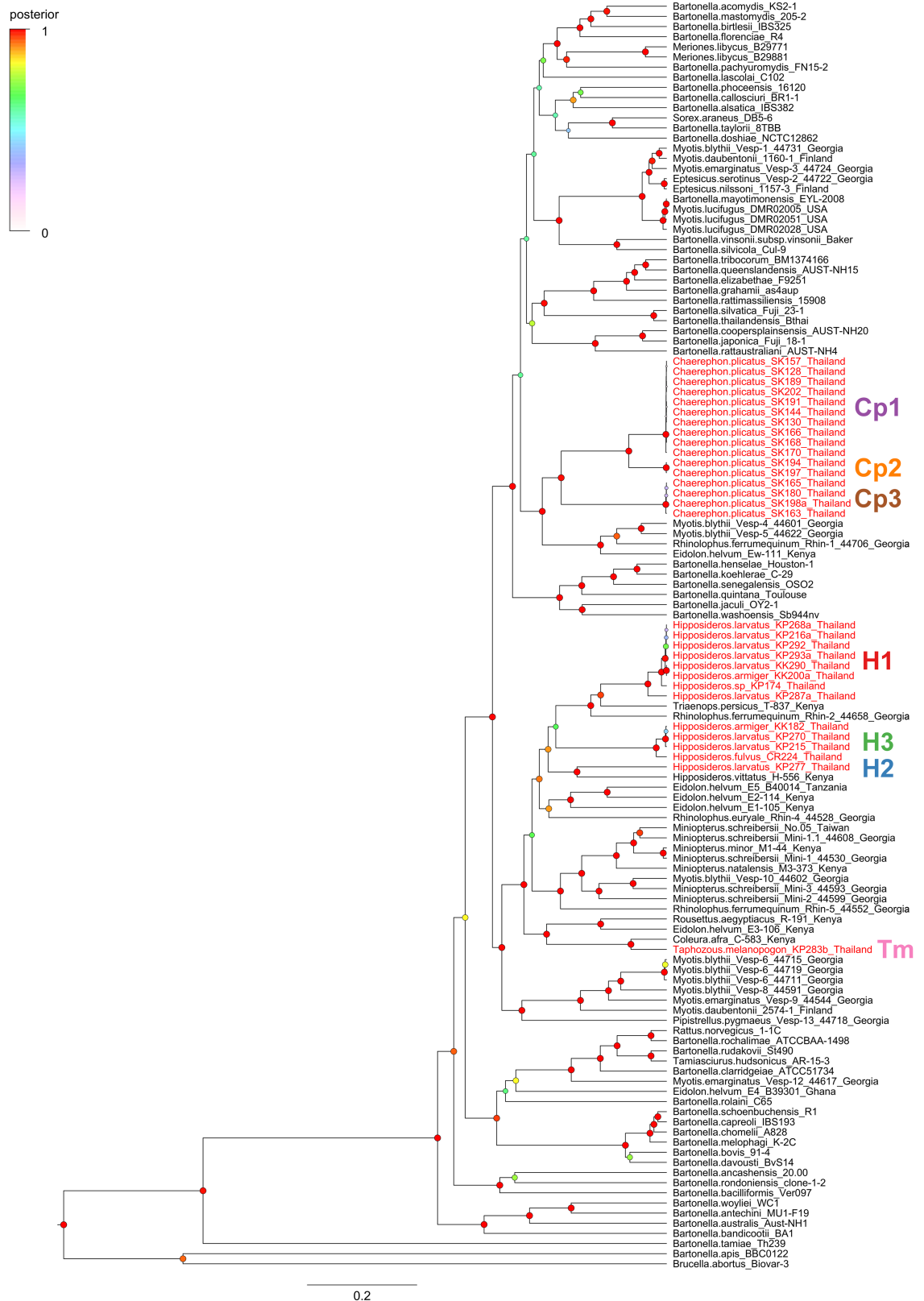
<https://doi.org/10.1371/journal.pone.0181696.t003>

relative to other *Bartonella* strains associated with bats. As with the *gltA* analysis, the posterior distributions for all relevant model parameters (for each partitioned locus) and the combined tree likelihood converged and had large effective sample sizes (ESS > 200). Posterior support for nodes was higher across the tree as compared to the *gltA* due to the added sequence information. The multi-locus phylogeny shows that genogroups Cp1-3 form a unified clade (posterior probability = 0.99) that is part of a larger clade (posterior probability = 1) with a *Bartonella* species isolated from *Eidolon helvum* in Africa [38,42] and multiple species isolated from *Myotis blythii* and *Rhinolophus ferrumequinum* in Georgia [22].

Genogroup H1 formed a clade (posterior probability = 1) with *Bartonella* species from *Triaenops persicus* in Kenya [42] and *Rhinolophus ferrumequinum* in Georgia [22] while genogroup H2 was linked (posterior probability = 1) to the *Bartonella* species from *Hipposideros vittatus* from Kenya [42]. All three genogroups from *Hipposideros* spp. bats (H1-3) were closely linked (posterior probability = 0.91) and more distantly related to *Bartonella* species from *Eidolon helvum* in Africa and *Rhinolophus euryale* in Georgia [22,38,42]. Strains KP287a from *H. larvatus* and KP174 from a *Hipposideros* sp. bat diverge slightly from the rest of genogroup H1 due to recombination events with genogroups H2 and H3, respectively. Similar to the *gltA* phylogeny, genogroup Tm was very similar to the *Bartonella* species from *Coleura afra* in Kenya and more distantly related to *Bartonella* species from other African fruit bats, *Eidolon helvum* and *Rousettus aegyptiacus* [42]. Genogroups H1-3 and Tm are all members of a large and well-supported clade (posterior probability = 1) composed entirely of bat-associated *Bartonella* species from Africa and Eurasia recognized in previous multi-locus phylogenetic analyses [22,38].

### Recombination and admixture analyses

The network phylogeny from SplitsTree (Fig 3) generated from concatenated sequences of five loci (*ftsZ*, *gltA*, *nuoG*, *rpoB*, and ITS) supported the distinction between the seven genogroups (Cp1-3, H1-3, and Tm). However, the pairwise homoplasy index [60] test found significant recombination among the isolates (mean = 0.19, variance =  $6.6 \times 10^{-6}$ , p-value < 0.0001). These recombination events can be seen in the web-like linkage between genogroups H1 and H2 for strain KP287a and the linkage between genogroups H1 and H3 for strain KP174. The optimal number of populations within the isolates was seven according to the ΔK method [62,63] after Bayesian clustering analysis using STRUCTURE [61]. All seven of these populations

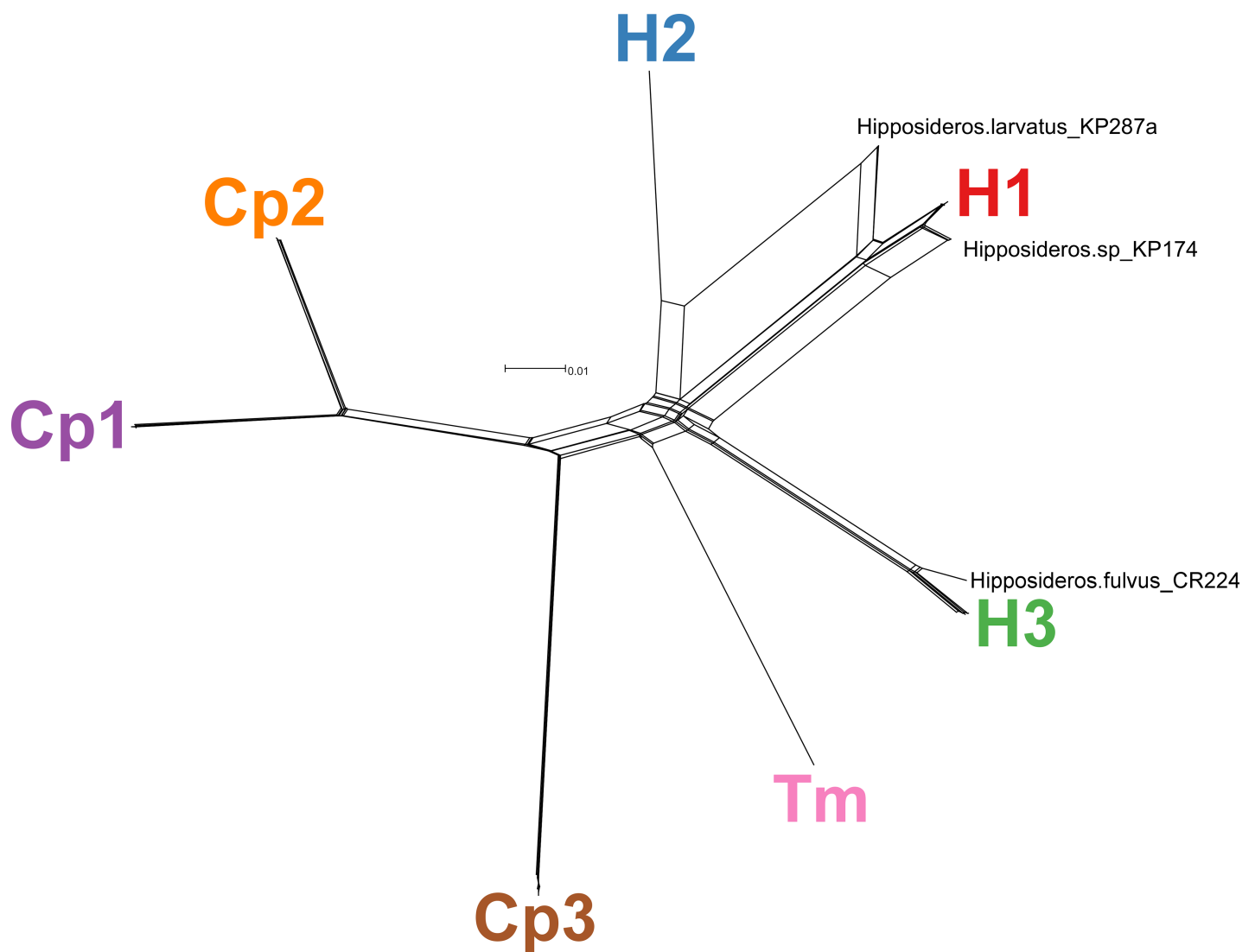


**Fig 2. Phylogenetic relationships among *Bartonella* genogroups from Thai bats, other strains from bats, and named *Bartonella* species assessed by multiple loci.** The Bayesian tree was inferred in BEAST by partitioned analysis of

five loci (*ftsZ*, *gltA*, *nuoG*, *rpoB*, and ITS) using unlinked GTR+ $\Gamma$ +I substitution models for each locus and a linked birth-death speciation model with incomplete sampling. Sequences were assembled from named *Bartonella* species, *Bartonella* strains from bats (those characterized by at least two loci), and 30 isolates from Thai bats. Branch lengths are in substitutions per site and posterior probabilities of nodes are indicated by the size and color of circles at each node. Tip labels for *Bartonella* strains from Thai bats are colored red and distinct genogroups are marked to the right of the tree. *Bartonella* strains from bats are labeled with the host species and country of origin.

<https://doi.org/10.1371/journal.pone.0181696.g002>

matched with the genogroups distinguished by the MLST profiles and phylogenetic analysis. The clustering analysis showed that strain KP287a was mostly composed of genogroup H1 with some genetic material from genogroup H2 and strain KP174 was almost entirely composed of genogroup H1 with some admixture with genogroup H3. This admixture is confirmed by the maximum likelihood analysis of the five sequenced loci (Figs C-G in S1 Text), showing that the *nuoG* sequence of strain KP174 clustered with genogroup H3 and the *rpoB* sequence of strain



**Fig 3. Network phylogeny of *Bartonella* strains from Thai bats.** The network was inferred using the NeighborNet algorithm in SplitsTree based on concatenated sequences of five loci (*ftsZ*, *gltA*, *nuoG*, *rpoB*, and ITS) from 30 *Bartonella* isolates analyzed by MLST. Distinct genogroups are named next to clusters of isolates. Recombinant isolates are labeled individually.

<https://doi.org/10.1371/journal.pone.0181696.g003>

KP287a clustered with genogroup H2. The relative amount of admixture (Fig 4) in these recombinant strains was also proportional to the size of *nuoG* (353 bp) and *rpoB* (833 bp) sequences. STRUCTURE analysis was also able to discern some admixture between strain CR224 from *H. fulvus* in Chiang Mai (genogroup H3) with genogroup Tm. This admixture was not as obvious as with strains KP287a and KP174, but is observable from the distinction of strain CR224 from all other members of genogroup H3 at the five sequenced loci (Figs C-G in S1 Text) and some web-like connections between genogroups H3 and Tm in the network phylogeny (Fig 3).

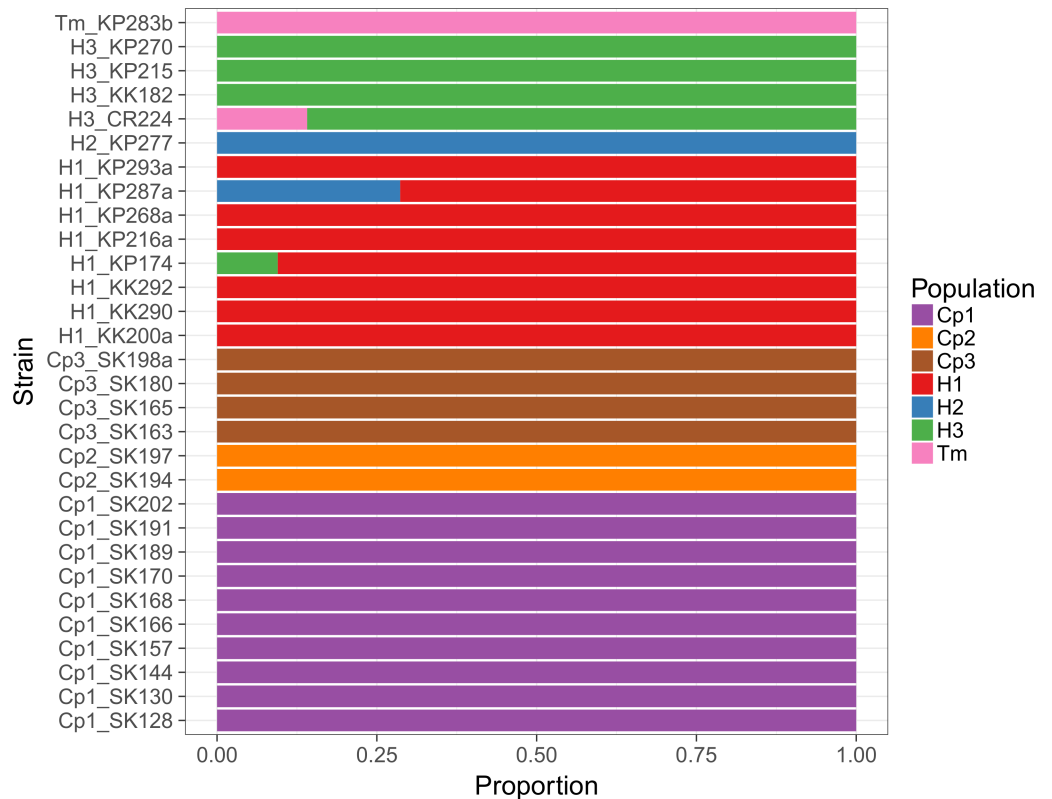
## Discussion

*Bartonella* is a highly diverse genus of bacteria and bats have been distinguished as particularly reliable sources of novel *Bartonella* species. The present study focused on characterization of *Bartonella* isolates from bat species in Thailand. We identified seven novel *Bartonella* genogroups in five species of bats using sequences of the *gltA* gene. Genogroups H1 through H3 were found in roundleaf bats (*H. armiger*, *H. larvatus*, and *H. fulvus*). Genogroups Cp1 through Cp3 were found in free-tailed bats (*C. plicatus*) and genogroup Tm was found in sheath-tailed bats (*T. melanopogon*).

Comparison with previous *gltA* sequences on GenBank showed that genogroup H1 had been previously detected in *H. armiger* and *H. larvatus* in Vietnam [35] and is closely related to sequences found in a bat fly (*Phthiridium fraterna*) removed from a *Hipposideros* sp. bat from Malaysia [34] and sequences found in *Rhinolophus* spp. from Vietnam and Georgia [22,35]. Genogroup H2 was found to be related to sequences found in *Hipposideros vittatus* (previously reported as *H. commersoni*) from Kenya [42,65], *Megaderma lyra* from Vietnam [35], and community dogs from Thailand [28]. Genogroup H3 clustered with *Bartonella* species identified in *Eidolon helvum* in Africa [38,42] and bat flies from *Pteropus hypomelanus*, *Ptenochirus jadori*, and *Harpyionycteris whiteheadi* in Malaysia and the Philippines [34]. Genogroup Tm was found to be very closely related to a *Bartonella* species from *Coleura afra* in Kenya [42].

Phylogenetic analysis of multiple loci confirmed that genogroups H1-3, Cp1-3, and Tm are divergent enough to be considered separate *Bartonella* species according to previously established criteria based on individual loci, with genogroups differing by 6.5–15.6% sequence identity [66]. Most genogroups displayed clonal behavior with very little variation at multiple loci, however genogroups H1 and H3 showed measurable genetic variation at several loci. Additionally, these groups showed some evidence of homologous recombination. These heterogeneous patterns of genetic variation and homologous recombination have been observed in other *Bartonella* species found in bats [38].

Host specificity of *Bartonella* species in bats has been a subject of some discussion [42,67, 68]. As more studies have been performed, it is clear that *Bartonella* species are typically shared among bats in the same families, superfamilies, and suborders [16]. Transmission may be facilitated by shared ectoparasites when species roost in sympatry [22]. All five of the focal bat species in this study inhabit caves and manmade structures and host a variety of ectoparasite families. *Chaerephon plicatus* has been found infested with bat flies (Diptera: Nycteribiidae), fleas (Siphonaptera: Ischnopsyllidae), ticks (Ixodida: Argasidae, Ixodidae), mites (Trombidiformes: Myobiidae; Sarcoptiformes: Sarcoptidae, Listrophoridae), and bat bugs (Hemiptera: Cimicidae) in Malaysia, the Philippines, and Thailand [69–72]. *Taphozous melanopogon* hosts bat flies (Diptera: Nycteribiidae, Streblidae), ticks (Ixodida: Argasidae), mites (Trombidiformes: Myobiidae, Trombiculidae; Sarcoptiformes: Listrophoridae; Mesostigmata: Macronyssidae, Spinturnicidae), and bat bugs (Hemiptera: Polyctenidae) in Thailand, Malaysia, Burma, Sri Lanka, Indonesia, and India [69,73–77]. Bat flies (Diptera: Nycteribiidae, Streblidae), ticks (Ixodida: Argasidae, Ixodidae), and mites (Trombidiformes: Myobiidae, Trombiculidae;



**Fig 4. Inferred admixture events among *Bartonella* strains in Thai bats.** Estimates of allele proportions from STRUCTURE based on the optimal clustering of  $K = 7$  using concatenated sequences of five loci (*ftsZ*, *gltA*, *nuoG*, *rpoB*, and ITS) from 30 *Bartonella* isolates analyzed by MLST. Populations are named according to genogroups identified by phylogenetic analyses.

<https://doi.org/10.1371/journal.pone.0181696.g004>

Sarcoptiformes: Lestrothoridae; Mesostigmata: Macronyssidae, Spinturnicidae) are known to parasitize *Hipposideros* spp., including *H. armiger* and *H. larvatus* in Vietnam, Indonesia, China, Thailand, Malaysia, and Burma [69,73,78–87]. Of these ectoparasite groups, nycteribiid and streblid bat flies, cimicid bugs, ischnopsyllid fleas, argasid and ixodid ticks, and macronyssid and spinturnicid mites are suspected vectors of *Bartonella* spp. in bats [17,34,53,88–93]. Trombiculid mites parasitizing rodents have been found harboring *Bartonella* spp. and may also be vectors of *Bartonella* spp. in bats [94,95].

Based on our observations of separate *Bartonella* species infecting *Chaerophon plicatus*, *Taphozous melanopogon*, and *Hipposideros* spp., we may surmise that transmission among these genera is uncommon, due in part to the specificity of *Bartonella* spp. to related host species and perhaps reinforced by the specificity of ectoparasites to their bat hosts. Although our focal species share a range of ectoparasite families, there are likely specific associations of ectoparasites to one or a few related bats. There are few data available concerning the host range of ectoparasites in Southeast Asia, so more study is warranted to fully understand the ecology and transmission dynamics of *Bartonella* spp. in bats and their ectoparasites in this region.

### Supporting information

**S1 Text. Supplementary material.** This file includes additional information on field and laboratory methods and supplementary tables and figures.  
(HTML)

## Acknowledgments

Thanks to Boonlert Lumlertdacha, Brett Petersen, Felix Jackson, and Kis Robertson for their participation in the fieldwork, and to Pongpun Sawatwong and Possawat Jorakate for their participation in culturing bacteria from bat blood. The findings and conclusions in this report are those of the authors and do not necessarily represent the official position of CDC.

## Author Contributions

**Conceptualization:** Michael Y. Kosoy, Sumalee Boonmar, Charles E. Rupprecht, Leonard F. Peruski.

**Data curation:** Clifton D. McKee, Michael Y. Kosoy, Ying Bai, Lynn M. Osikowicz, Richard Franka, Amy T. Gilbert.

**Formal analysis:** Clifton D. McKee.

**Funding acquisition:** Michael Y. Kosoy, Charles E. Rupprecht.

**Investigation:** Clifton D. McKee, Michael Y. Kosoy, Ying Bai, Lynn M. Osikowicz, Richard Franka, Amy T. Gilbert, Sumalee Boonmar, Charles E. Rupprecht, Leonard F. Peruski.

**Resources:** Clifton D. McKee, Michael Y. Kosoy, Ying Bai, Lynn M. Osikowicz, Richard Franka, Amy T. Gilbert, Sumalee Boonmar, Charles E. Rupprecht, Leonard F. Peruski.

**Software:** Clifton D. McKee.

**Supervision:** Michael Y. Kosoy, Sumalee Boonmar, Charles E. Rupprecht, Leonard F. Peruski.

**Visualization:** Clifton D. McKee.

**Writing – original draft:** Clifton D. McKee, Michael Y. Kosoy, Leonard F. Peruski.

**Writing – review & editing:** Clifton D. McKee, Michael Y. Kosoy, Ying Bai, Lynn M. Osikowicz, Richard Franka, Amy T. Gilbert, Sumalee Boonmar, Charles E. Rupprecht, Leonard F. Peruski.

## References

1. Woolhouse MEJ, Gowtage-Sequeria S. Host range and emerging and reemerging pathogens. *Emerg Infect Dis. Center Disease Control*; 2005; 11: 1842–1847. <https://doi.org/10.3201/eid1112.050997> PMID: 16485468
2. Jones KE, Patel NG, Levy MA, Storeygard A, Balk D, Gittleman JL, et al. Global trends in emerging infectious diseases. *Nature*. 2008; 451: 990–993. <https://doi.org/10.1038/nature06536> PMID: 18288193
3. Calisher CH, Childs JE, Field HE, Holmes K V, Schountz T. Bats: important reservoir hosts of emerging viruses. *Clin Microbiol Rev*. 2006; 19: 531–545. <https://doi.org/10.1128/CMR.00017-06> PMID: 16847084
4. Kosoy MY. Ecological associations between bacteria of the genus *Bartonella* and mammals. *Biol Bull*. 2010; 37: 716–724. <https://doi.org/10.1134/S1062359010070071>
5. Billeter SA, Levy MG, Chomel BB, Breitschwerdt EB. Vector transmission of *Bartonella* species with emphasis on the potential for tick transmission. *Med Vet Entomol*. 2008; 22: 1–15. <https://doi.org/10.1111/j.1365-2915.2008.00713.x> PMID: 18380649
6. Tsai Y-L, Chang C-C, Chuang S-T, Chomel BB. *Bartonella* species and their ectoparasites: selective host adaptation or strain selection between the vector and the mammalian host? *Comp Immunol Microbiol Infect Dis. Elsevier Ltd*; 2011; 34: 299–314. <https://doi.org/10.1016/j.cimid.2011.04.005> PMID: 21616536
7. Chomel BB, Kasten RW, Floyd-Hawkins K, Chi B, Yamamoto K, Roberts-Wilson J, et al. Experimental transmission of *Bartonella henselae* by the cat flea. *J Clin Microbiol*. 1996; 34: 1952–1956. PMID: 8818889

8. Bouhsira E, Ferrandez Y, Liu M, Franc M, Boulouis H, Biville F. *Ctenocephalides felis* an in vitro potential vector for five *Bartonella* species. *Comp Immunol Microbiol Infect Dis*. Elsevier Ltd; 2013; 36: 105–111. <https://doi.org/10.1016/j.cimid.2012.10.004> PMID: 23200028
9. Morick D, Krasnov BR, Khokhlova IS, Gottlieb Y, Harrus S. Transmission dynamics of *Bartonella* sp. strain OE 1–1 in Sundevall's jirds (*Meriones crassus*). *Appl Environ Microbiol*. 2013; 79: 1258–1264. <https://doi.org/10.1128/AEM.03011-12> PMID: 23241972
10. Kernif T, Leulmi H, Socolovschi C, Berenger J-M, Lepidi H, Bitam I, et al. Acquisition and excretion of *Bartonella quintana* by the cat flea, *Ctenocephalides felis felis*. *Mol Ecol*. 2014; 23: 1204–1212. <https://doi.org/10.1111/mec.12663> PMID: 24400877
11. Leulmi H, Bitam I, Berenger J-M, Lepidi H, Rolain J-M, Almeras L, et al. Competence of *Cimex lectularius* bed bugs for the transmission of *Bartonella quintana*, the agent of trench fever. *PLoS Negl Trop Dis*. 2015; 9: e0003789. <https://doi.org/10.1371/journal.pntd.0003789> PMID: 26000974
12. Breitschwerdt EB, Maggi RG, Chomel BB, Lappin MR. Bartonellosis: an emerging infectious disease of zoonotic importance to animals and human beings. *J Vet Emerg Crit Care*. 2010; 20: 8–30. <https://doi.org/10.1111/j.1476-4431.2009.00496.x> PMID: 20230432
13. Chomel BB, Kasten RW. Bartonellosis, an increasingly recognized zoonosis. *J Appl Microbiol*. 2010; 109: 743–750. <https://doi.org/10.1111/j.1365-2672.2010.04679.x> PMID: 20148999
14. Vayssier-Taussat M, Moutailler S, Féménia F, Raymond P, Croce O, La Scola B, et al. Identification of novel zoonotic activity of *Bartonella* spp., France. *Emerg Infect Dis*. 2016; 22: 457–462. <https://doi.org/10.3201/eid2203.150269> PMID: 26885624
15. Lei BR, Olival KJ. Contrasting patterns in mammal-bacteria coevolution: *Bartonella* and *Leptospira* in bats and rodents. *PLoS Negl Trop Dis*. 2014; 8: e2738. <https://doi.org/10.1371/journal.pntd.0002738> PMID: 24651646
16. McKee CD, Hayman DTS, Kosoy MY, Webb CT. Phylogenetic and geographic patterns of bartonella host shifts among bat species. *Infect Genet Evol*. Elsevier B.V.; 2016; 44: 382–394. <https://doi.org/10.1016/j.meegid.2016.07.033> PMID: 27473781
17. Leulmi H, Aouadi A, Bitam I, Bessas A, Benakha A, Raoult D, et al. Detection of *Bartonella tamiae*, *Coxiella burnetii* and rickettsiae in arthropods and tissues from wild and domestic animals in northeastern Algeria. *Parasit Vectors*. Parasites & Vectors; 2016; 9: 27. <https://doi.org/10.1186/s13071-016-1316-9> PMID: 26791781
18. Wilkinson DA, Duron O, Cordonin C, Gomard Y, Ramasindrazana B, Mavingui P, et al. The bacteriome of bat flies (Nycteribiidae) from the Malagasy region: a community shaped by host ecology, bacterial transmission mode, and host-vector specificity. *Appl Environ Microbiol*. 2016; 82: 1778–1788. <https://doi.org/10.1128/AEM.03505-15> PMID: 26746715
19. Davoust B, Marié J-L, Dahmani M, Berenger J-M, Bompar J-M, Blanchet D, et al. Evidence of *Bartonella* spp. in blood and ticks (*Ornithodoros hasei*) of bats, in French Guiana. *Vector-Borne Zoonotic Dis*. 2016; 16: 516–519. <https://doi.org/10.1089/vbz.2015.1918> PMID: 27305604
20. Reeves WK, Beck J, Orlova M V, Daly JL, Pippin K, Revan F, et al. Ecology of bats, their ectoparasites, and associated pathogens on Saint Kitts Island. *J Med Entomol*. 2016; 53: 1218–1225. <https://doi.org/10.1093/jme/tjw078> PMID: 27282816
21. Dietrich M, Tjale MA, Weyer J, Kearney T, Seamark ECJ, Nel LH, et al. Diversity of *Bartonella* and *Rickettsia* spp. in bats and their blood-feeding ectoparasites from South Africa and Swaziland. Fenton B, editor. *PLoS One*. 2016; 11: e0152077. <https://doi.org/10.1371/journal.pone.0152077> PMID: 26999518
22. Urushadze L, Bai Y, Osikowicz LM, McKee CD, Kandaurov A, Kuzmin I V, et al. Prevalence, diversity, and host associations of *Bartonella* strains in bats from Georgia (Caucasus). *PLoS Negl Trop Dis*. 2017; 11: e0005428. <https://doi.org/10.1371/journal.pntd.0005428> PMID: 28399125
23. Han H-J, Wen H, Zhao L, Liu J-W, Luo L-M, Zhou C-M, et al. Novel *Bartonella* species in insectivorous bats, northern China. Mundertoh UG, editor. *PLoS One*. 2017; 12: e0167915. <https://doi.org/10.1371/journal.pone.0167915> PMID: 28081122
24. Stuckey MJ, Boulouis H-J, Cliquet F, Picard-Meyer E, Servat A, Aréchiga-Ceballos N, et al. Potentially zoonotic *Bartonella* in bats from France and Spain. *Emerg Infect Dis*. 2017; 23: 539–541. <https://doi.org/10.3201/eid2303.160934> PMID: 28221109
25. Lilley TM, Wilson CA, Bernard RF, Willcox E V, Vesterinen EJ, Webber QMR, et al. Molecular detection of *Candidatus* *Bartonella mayotimonensis* in North American bats. *Vector-Borne Zoonotic Dis*. 2017; XX: vbz.2016.2080. <https://doi.org/10.1089/vbz.2016.2080>
26. Cicuttin GL, De Salvo MN, La Rosa I, Dohmen FEG. *Neorickettsia risticii*, *Rickettsia* sp. and *Bartonella* sp. in *Tadarida brasiliensis* bats from Buenos Aires, Argentina. *Comp Immunol Microbiol Infect Dis*. Elsevier; 2017; 52: 1–5. <https://doi.org/10.1016/j.cimid.2017.04.004> PMID: 28673455

27. Ikeda P, Seki MC, Carrasco AOT, Rudiak L V, Miranda JMD, Goncalves SMM, et al. Evidence and molecular characterization of *Bartonella* spp. and hemoplasmas in neotropical bats in Brazil. *Epidemiol Infect.* 2017; 1–15. <https://doi.org/10.1017/S0950268817000966> PMID: 28502279
28. Bai Y, Kosoy MY, Boonmar S, Sawatwong P, Sangmaneeet S, Peruski LF. Enrichment culture and molecular identification of diverse *Bartonella* species in stray dogs. *Vet Microbiol.* Elsevier B.V.; 2010; 146: 314–319. <https://doi.org/10.1016/j.vetmic.2010.05.017> PMID: 20570065
29. Lin EY, Tsigrelis C, Baddour LM, Lepidi H, Rolain J-M, Patel R, et al. *Candidatus* *Bartonella mayotimonensis* and endocarditis. *Emerg Infect Dis.* 2010; 16: 500–503. <https://doi.org/10.3201/eid1603.081673> PMID: 20202430
30. Podsiadly E, Chmielewski T, Karbowski G, Kedra E, Tylewska-Wierzbanowska S. The occurrence of spotted fever rickettsioses and other tick-borne infections in forest workers in Poland. *Vector-Borne Zoonotic Dis.* 2010; 11: 985–989. <https://doi.org/10.1089/vbz.2010.0080> PMID: 21083370
31. Veikkolainen V, Vesterinen EJ, Lilley TM, Pulliainen AT. Bats as reservoir hosts of human bacterial pathogen, *Bartonella mayotimonensis*. *Emerg Infect Dis.* 2014; 20: 960–967. <https://doi.org/10.3201/eid2006.130956> PMID: 24856523
32. Lin J-W, Hsu Y-M, Chomel BB, Lin L-K, Pei J-C, Wu S-H, et al. Identification of novel *Bartonella* spp. in bats and evidence of Asian gray shrew as a new potential reservoir of *Bartonella*. *Vet Microbiol.* Elsevier B.V.; 2012; 156: 119–126. <https://doi.org/10.1016/j.vetmic.2011.09.031> PMID: 22005177
33. Han BA, Kramer AM, Drake JM. Global patterns of zoonotic disease in mammals. *Trends Parasitol.* Elsevier Ltd; 2016; 32: 565–577. <https://doi.org/10.1016/j.pt.2016.04.007> PMID: 27316904
34. Morse SF, Olival KJ, Kosoy MY, Billeter SA, Patterson BD, Dick CW, et al. Global distribution and genetic diversity of *Bartonella* in bat flies (Hippoboscoidea, Streblidae, Nycteribiidae). *Infect Genet Evol.* Elsevier B.V.; 2012; 12: 1717–23. <https://doi.org/10.1016/j.meegid.2012.06.009> PMID: 22771358
35. Anh PH, Van Cuong N, Son NT, Tue NT, Kosoy MY, Woolhouse MEJ, et al. Diversity of *Bartonella* spp. in bats, southern Vietnam. *Emerg Infect Dis.* 2015; 21: 1266–1267. <https://doi.org/10.3201/eid2107.141760> PMID: 26079810
36. Arvand M, Feil EJ, Giladi M, Boulouis H-J, Viezens J. Multi-locus sequence typing of *Bartonella henselae* isolates from three continents reveals hypervirulent and feline-associated clones. Redfield R, editor. *PLoS One.* 2007; 2: e1346. <https://doi.org/10.1371/journal.pone.0001346> PMID: 18094753
37. Chaloner GL, Ventosilla Palmira, Birtles RJ. Multi-locus sequence analysis reveals profound genetic diversity among isolates of the human pathogen *Bartonella bacilliformis*. Picardeau M, editor. *PLoS Negl Trop Dis.* 2011; 5: e1248. <https://doi.org/10.1371/journal.pntd.0001248> PMID: 21811647
38. Bai Y, Hayman DTS, McKee CD, Kosoy MY. Classification of *Bartonella* strains associated with straw-colored fruit bats (*Eidolon helvum*) across Africa using a multi-locus sequence typing platform. *PLoS Negl Trop Dis.* 2015; 9: e0003478. <https://doi.org/10.1371/journal.pntd.0003478> PMID: 25635826
39. Buffet J-P, Pisanu B, Brisse S, Roussel S, Félix B, Halos L, et al. Deciphering *Bartonella* diversity, recombination, and host specificity in a rodent community. Skurnik M, editor. *PLoS One.* 2013; 8: e68956. <https://doi.org/10.1371/journal.pone.0068956> PMID: 23894381
40. Kosoy MY, Bai Y, Boonmar S, Sawatwong P, Jorakate P, Peruski LF, et al. *Bartonella* species in bats from Thailand. International Conference and Emerging Infectious Diseases Program and Abstract Book. 2012. p. 129.
41. Norman AF, Regnery R, Jameson P, Greene C, Krause DC. Differentiation of *Bartonella*-like isolates at the species level by PCR-restriction fragment length polymorphism in the citrate synthase gene. *J Clin Microbiol.* 1995; 33: 1797–1803. PMID: 7545181
42. Kosoy MY, Bai Y, Lynch T, Kuzmin I V, Niezgodna M, Franka R, et al. *Bartonella* spp. in bats, Kenya. *Emerg Infect Dis.* 2010; 16: 1875–1881. <https://doi.org/10.3201/eid1612.100601> PMID: 21122216
43. Zeaiter Z, Liang Z, Raoult D. Genetic classification and differentiation of *Bartonella* species based on comparison of partial *ftsZ* gene sequences. *J Clin Microbiol.* 2002; 40: 3641–3647. <https://doi.org/10.1128/JCM.40.10.3641-3647.2002> PMID: 12354859
44. Colborn JM, Kosoy MY, Motin VL, Telepnev M V, Valbuena G, Myint KSA, et al. Improved detection of *Bartonella* DNA in mammalian hosts and arthropod vectors by real-time PCR using the NADH dehydrogenase gamma subunit (*nuoG*). *J Clin Microbiol.* 2010; 48: 4630–4633. <https://doi.org/10.1128/JCM.00470-10> PMID: 20926707
45. Renesto P, Gouvernet J. Use of *rpoB* gene analysis for detection and identification of *Bartonella* species. *J Clin Microbiol.* 2001; 39: 430–437. <https://doi.org/10.1128/JCM.39.2.430-437.2001> PMID: 11158086
46. Diniz PP, Maggi RG, Schwartz DS, Cadenas MB, Bradley JM, Hegarty BC, et al. Canine bartonellosis: serological and molecular prevalence in Brazil and evidence of co-infection with *Bartonella henselae*



- and *Bartonella vinsonii* subsp. *berkhoffii*. Vet Res. 2007; 38: 697–710. <https://doi.org/10.1051/vetres:2007023> PMID: 17583666
47. Katoh K, Standley DM. MAFFT multiple sequence alignment software version 7: improvements in performance and usability. Mol Biol Evol. 2013; 30: 772–780. <https://doi.org/10.1093/molbev/mst010> PMID: 23329690
  48. Castresana J. Selection of conserved blocks from multiple alignments for their use in phylogenetic analysis. Mol Biol Evol. 2000; 17: 540–552. <https://doi.org/10.1093/oxfordjournals.molbev.a026334> PMID: 10742046
  49. Tamura K, Stecher G, Peterson D, Filipiński A, Kumar S. MEGA6: molecular evolutionary genetics analysis version 6.0. Mol Biol Evol. 2013; 30: 2725–2729. <https://doi.org/10.1093/molbev/mst197> PMID: 24132122
  50. Darriba D, Taboada GL, Doallo R, Posada D. jModelTest 2: more models, new heuristics and parallel computing. Nat Methods. Nature Publishing Group; 2012; 9: 772–772. <https://doi.org/10.1038/nmeth.2109> PMID: 22847109
  51. Burnham KP, Anderson DR. Multimodel inference: understanding AIC and BIC in model selection. Sociol Methods Res. 2004; 33: 261–304.
  52. Stamatakis A. RAxML version 8: a tool for phylogenetic analysis and post-analysis of large phylogenies. Bioinformatics. 2014; 30: 1312–1313. <https://doi.org/10.1093/bioinformatics/btu033> PMID: 24451623
  53. Judson SD, Frank HK, Hadly EA. Bartonellae are prevalent and diverse in Costa Rican bats and bat flies. Zoonoses Public Health. 2015; 62: 609–617. <https://doi.org/10.1111/zph.12188> PMID: 25810119
  54. Concannon R, Wynn-Owen K, Simpson VR, Birtles RJ. Molecular characterization of haemoparasites infecting bats (Microchiroptera) in Cornwall, UK. Parasitology. 2005; 131: 489–496. <https://doi.org/10.1017/S0031182005008097> PMID: 16174413
  55. Lilley TM, Veikkolainen V, Pulliainen AT. Molecular detection of *Candidatus* Bartonella hemsundetiensis in bats. Vector-Borne Zoonotic Dis. 2015; 15: 706–708. <https://doi.org/10.1089/vbz.2015.1783> PMID: 26501463
  56. Drummond AJ, Rambaut A. BEAST: Bayesian evolutionary analysis by sampling trees. BMC Evol Biol. 2007; 7: 214. <https://doi.org/10.1186/1471-2148-7-214> PMID: 17996036
  57. Drummond AJ, Suchard MA, Xie D, Rambaut A. Bayesian phylogenetics with BEAUti and the BEAST 1.7. Mol Biol Evol. 2012; 29: 1969–1973. <https://doi.org/10.1093/molbev/mss075> PMID: 22367748
  58. Stadler T. On incomplete sampling under birth–death models and connections to the sampling-based coalescent. J Theor Biol. Elsevier; 2009; 261: 58–66. <https://doi.org/10.1016/j.jtbi.2009.07.018> PMID: 19631666
  59. Huson DH. Application of phylogenetic networks in evolutionary studies. Mol Biol Evol. 2005; 23: 254–267. <https://doi.org/10.1093/molbev/msj030> PMID: 16221896
  60. Bruen TC, Philippe H, Bryant D. A simple and robust statistical test for detecting the presence of recombination. Genetics. 2005; 172: 2665–2681. <https://doi.org/10.1534/genetics.105.048975> PMID: 16489234
  61. Pritchard J, Stephens M, Donnelly P. Inference of population structure using multilocus genotype data. Genetics. 2000; 155: 945–59. PMID: 10835412
  62. Evanno G, Regnaut S, Goudet J. Detecting the number of clusters of individuals using the software STRUCTURE: a simulation study. Mol Ecol. 2005; 14: 2611–2620. <https://doi.org/10.1111/j.1365-294X.2005.02553.x> PMID: 15969739
  63. Earl DA, VonHoldt BM. STRUCTURE HARVESTER: a website and program for visualizing STRUCTURE output and implementing the Evanno method. Conserv Genet Resour. 2012; 4: 359–361. <https://doi.org/10.1007/s12686-011-9548-7>
  64. Janes JK, Miller JM, Dupuis JR, Malenfant RM, Gorrell JC, Cullingham CI, et al. The K = 2 conundrum. Mol Ecol. 2017; 38: 42–49. <https://doi.org/10.1111/mec.14187>
  65. Kading RC, Gilbert AT, Mossel EC, Crabtree MB, Kuzmin I V, Niezgodka M, et al. Isolation and molecular characterization of Fikirini rhabdovirus, a novel virus from a Kenyan bat. J Gen Virol. 2013; 94: 2393–2398. <https://doi.org/10.1099/vir.0.053983-0> PMID: 23939976
  66. La Scola B, Zeaiter Z, Khamis A, Raoult D. Gene-sequence-based criteria for species definition in bacteriology: the Bartonella paradigm. Trends Microbiol. 2003; 11: 318–321. [https://doi.org/10.1016/S0966-842X\(03\)00143-4](https://doi.org/10.1016/S0966-842X(03)00143-4) PMID: 12875815
  67. Bai Y, Kosoy MY, Recuenco S, Alvarez Castillo D, Moran D, Turmelle AS, et al. Bartonella spp. in bats, Guatemala. Emerg Infect Dis. 2011; 17: 1269–1272. <https://doi.org/10.3201/eid1707.101867> PMID: 21762584

68. Bai Y, Recuenco S, Gilbert AT, Osikowicz LM, Gomez J, Rupprecht CE, et al. Prevalence and diversity of *Bartonella* spp. in bats in Peru. *Am J Trop Med Hyg.* 2012; 87: 518–523. <https://doi.org/10.4269/ajtmh.2012.12-0097> PMID: 22826480
69. Beck AJ. A survey of bat ectoparasites in West Malaysia. *J Med Entomol.* 1971; 8: 147–152. PMID: 5157835
70. Corpuz-Raros LA, Lit IL Jr. List of mites (Acari) inhabiting Philippine caves and cave-dwelling vertebrates. *Museum Publ Nat Hist.* 2015; 4: 26–50.
71. Williams JE, Imlarp S, Top FH Jr., Cavanaugh DC, Russell PK. Kaeng Khoi virus from naturally infected bedbugs (Cimicidae) and immature free-tailed bats. *Bull World Health Organ.* 1976; 53: 365–369. PMID: 1086729
72. Alvarez JD V, Lit IL Jr, Alviola PA. Bat flies (Diptera: Nycteribiidae) from Mount Makiling, Luzon Island: New host and distribution records, with a checklist of species found in the Philippines. *Check List.* 2015; 11: 1509. <https://doi.org/10.15560/15.1.1509>
73. Jobling B. A revision of the genus *Nycteribosca* Speiser (Diptera Pupipara, Streblidae). *Parasitology.* 1934; <https://doi.org/10.1017/S0031182000023349>
74. Maa TC. Records and descriptions of Nycteribiidae and Streblidae (Diptera). *Pacific Insects.* 1962; 4: 417–436.
75. Maa TC. On new Diptera, Pupipara from the Oriental region. *Pacific Insects.* 1974; 16: 465–486.
76. Zade V, Thakare V, Malik LA, Kali A, Dandge P. Diversity of ectoparasites present on some species of bats from Navegaon National Park, Maharashtra, India. *Biol Forum.* 2012; 4: 35–41.
77. Traub R, Starcke H. The function of combs in ectoparasitic insects. *Proceedings of the International Conference on Fleas.* 1977. pp. 79–87.
78. Aroon S, Hill III JG, Artchawakom T, Kupittayanant S, Thanee N. Ectoparasites associated with bats in tropical forest of northeastern Thailand. *J Agric Technol.* 2015; 11: 1781–1792.
79. Azhar I, Anwarali Khan FA, Ismail N, Abdullah MT. Checklist of bat flies (Diptera: Nycteribiidae and Streblidae) and their associated bat hosts in Malaysia. *Check List.* 2015; 11: 1777. <https://doi.org/10.15560/11.5.1777>
80. Bush SE, Robbins RG. New host and locality records for *Ixodes simplex* Neumann and *Ixodes vespertilionis* Koch (Acari: Ixodidae) from bats (Chiroptera: Hipposideridae, Rhinolophidae and Vespertilionidae) in southern China. *Int J Acarol.* 2012; 38: 1–5. <https://doi.org/10.1080/01647954.2011.569509>
81. Wilson N. New distributional records of ticks from Southeast Asia and the Pacific (Metastigmata: Argasidae, Ixodidae). *Orient Insects.* 1970; 4: 37–46. <https://doi.org/10.1080/00305316.1970.10433939>
82. Ahamad M, Ibrahim H, Bujang MK, Mohd Sah S-A, Mohamad N, Nor SM, et al. A survey of acarine ectoparasites of bats (Chiroptera) in Malaysia. *J Med Entomol.* 2013; 50: 140–146. <https://doi.org/10.1603/ME11240> PMID: 23427663
83. Domrow R. The Asian species of *Whartonia* (Acarina, Trombiculidae). *Treubia.* 1962; 26: 1–9.
84. Mariana A, Zuraidawati Z, Ho T, Mohd Kulaimi B, Saleh I, Shukor M, et al. A survey of ectoparasites in Gunung Stong Forest Reserve, Kelantan, Malaysia. *Southeast Asian J Trop Med Public Health.* 2005; 36: 1125–1131. PMID: 16438136
85. Nadchatram M. Two new species of Old World *Whartonia* (Acari: Prostigmata: Trombiculidae). *J Med Entomol.* 1980; 17: 324–327.
86. Theodor O. New species and new records of Diptera Pupipara II. Species from Asia and Africa. *J Med Entomol.* 1973; 10: 556–569. PMID: 4779919
87. Uchikawa K, Kobayashi T. A contribution to the ectoparasite fauna of bats in Thailand II. Blood-sucking Acari (Argasidae, Spinturnicidae and Macronyssidae). *Contrib from Biol Lab Kyoto Univ.* 1978; 25: 249–254.
88. Billeter SA, Hayman DTS, Peel AJ, Baker KS, Wood JLN, Cunningham AA, et al. *Bartonella* species in bat flies (Diptera: Nycteribiidae) from western Africa. *Parasitology.* 2012; 139: 324–329. <https://doi.org/10.1017/S0031182011002113> PMID: 22309510
89. Reeves WK, Loftis AD, Gore JA, Dasch GA. Molecular evidence for novel bartonella species in *Trichobius major* (Diptera: Streblidae) and *Cimex adjunctus* (Hemiptera: Cimicidae) from two southeastern bat caves, U.S.A. *J Vector Ecol.* 2005; 30: 339–341. PMID: 16599175
90. Brook CE, Bai Y, Dobson AP, Osikowicz LM, Ranaivoson HC, Zhu Q, et al. *Bartonella* spp. in fruit bats and blood-feeding ectoparasites in Madagascar. *Vinetz JM, editor. PLoS Negl Trop Dis.* 2015; 9: e0003532. <https://doi.org/10.1371/journal.pntd.0003532> PMID: 25706653
91. Reeves WK, Rogers TE, Durden LA, Dasch GA. Association of *Bartonella* with the fleas (Siphonaptera) of rodents and bats using molecular techniques. *J Vector Ecol.* 2007; 32: 118–122. [https://doi.org/10.3376/1081-1710\(2007\)32\[118:AOWTF\]2.0.CO;2](https://doi.org/10.3376/1081-1710(2007)32[118:AOWTF]2.0.CO;2) PMID: 17633432

92. Loftis AD, Gill JS, Schriefer ME, Levin ML, Ereemeeva ME, Gilchrist MJR, et al. Detection of *Rickettsia*, *Borrelia*, and *Bartonella* in *Carios kelleyi* (Acari: Argasidae). *J Med Entomol*. 2005; 42: 473–480. [https://doi.org/10.1603/0022-2585\(2005\)042\[0473:DORBAB\]2.0.CO;2](https://doi.org/10.1603/0022-2585(2005)042[0473:DORBAB]2.0.CO;2) PMID: 15962801
93. Hornok S, Kovács R, Meli ML, Gönczi E, Hofmann-Lehmann R, Kontschán J, et al. First detection of bartonellae in a broad range of bat ectoparasites. *Vet Microbiol*. 2012; 159: 541–543. <https://doi.org/10.1016/j.vetmic.2012.04.003> PMID: 22551590
94. Klangthong K, Promsthaporn S, Leepitakrat S, Schuster AL, McCardle PW, Kosoy M, et al. The distribution and diversity of *Bartonella* species in rodents and their ectoparasites across Thailand. Shao R, editor. *PLoS One*. 2015; 10: e0140856. <https://doi.org/10.1371/journal.pone.0140856> PMID: 26484537
95. Loan HK, Cuong N Van, Takhampunya R, Klangthong K, Osikowicz L, Kiet BT, et al. *Bartonella* species and trombiculid mites of rats from the Mekong Delta of Vietnam. *Vector-Borne Zoonotic Dis*. 2015; 15: 40–47. <https://doi.org/10.1089/vbz.2014.1604> PMID: 25629779